

**Nikki Plummer**

Head of Domestic  
Abuse and  
Interpersonal  
Violence at  
Birmingham  
Children's Trust

*BIRMINGHAM*  
**DOMESTIC  
ABUSE**

*Prevention  
strategy*

*Working Together to Transform Lives*

*Birmingham Domestic Abuse Local Strategic*

# Birmingham's Domestic Abuse Prevention Strategy 2024+

We know that domestic abuse can affect anyone. If you would like to speak to someone, please see support details below.

**In an emergency, please call 999**

**If you need support the domestic abuse helpline is open to everyone, every day 9:15 – 5:15 on 0808 800 0028**

For women:

- Domestic Abuse Hub - Birmingham and Solihull Women's Aid
- Webchat is open Monday to Friday 10 – 4, and more information is available at <https://bswaid.org/>

For men:

- Trident Reach helpline is open Monday to Friday 9-5 on 0800 111 4223 and more information is available at <https://tridentgroup.org.uk/care-support/domestic-abuse-services>

For LGBTQ+ people:

- Birmingham LGBT's helpline is open Monday to Friday 10am – 9pm and Saturdays 11:30am to 7pm on 0121 643 0821 and more information is available at <https://blgbt.org/services/support-services/domestic-violence/>

*Working together to transform lives*

# Birmingham's Domestic Abuse Prevention Strategy 2024-29

- Domestic abuse is a serious issue, both nationally and here in Birmingham.
- We know that it has a devastating, long-lasting impact upon the safety, health and wider life chances of women, children, and families.
- It has been a leading cause of homelessness, nationwide and in Birmingham, for several years. And a leading cause for children's services referrals and need for police support.
- Most importantly, when survivors are not supported effectively, domestic abuse can end in murder or suicide.



*Working together to transform lives*

# Overview - A City Strategy

- This is not a city council strategy but a City of Birmingham strategy. Created in partnership with key organisations, it recognises that no single agency can stop DA alone.
- Every agency, every individual, across the whole system has a collective responsibility to support survivors, including children, at the earliest point, and to hold perpetrators of abuse to account.
- This strategy embeds our new partnership values, including acknowledging intersectionality around DA and the gendered nature of DA.
  - Nationally, around **80%** of victims of domestic homicide are women.
  - In Birmingham, **95%** of people who present to the Council as homeless as a result of domestic abuse are women.



*Working together to transform lives*



# Our Leadership Commitment

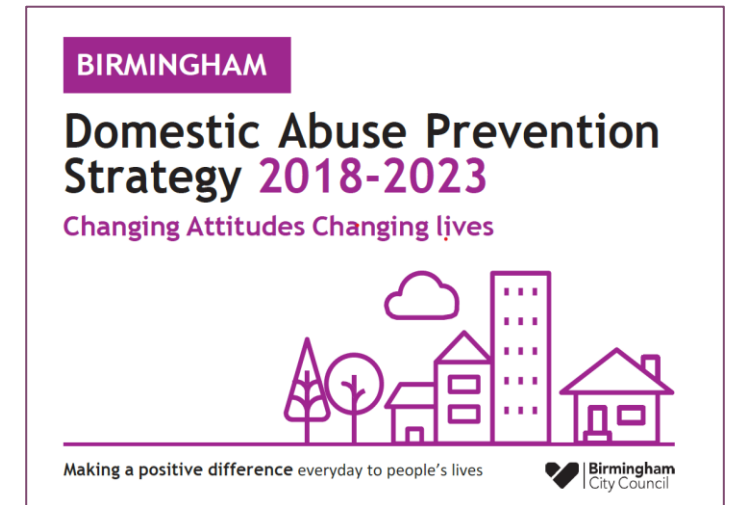
- I acknowledge that we are facing huge financial challenges across the city, and this strategy requires partners, more than ever, to work collaboratively, utilising the resources that we have to ensure that all survivors are supported.
- To make a change, we need to think and act differently.
- We need to embed an approach that firmly puts prevention first, increasing public awareness and understanding of DA and shifting cultural attitudes to no longer tolerate it & to stop DA from taking place.
- We also need intervene earlier to prevent escalation of abuse at every point.

**Your continued commitment on this agenda is crucial**  
***Working together, we can transform Lives of Survivors***

*Working together to transform lives*

# Birmingham's history of Domestic Abuse Prevention

- Strong proud history of working collaboratively to tackle DA, with our local partnership Board.
- “Changing Lives Changing attitudes, DA Prevention Strategy 2018-2023”, outlined a proactive prevention model, highlighting the importance of identifying DA as early as possible to limit its impact in the future, whilst providing support and safety.
- Recognised nationally, as a good practice strategy.
- Developed 3 years before the statutory requirement placed on LA’s to have a DA strategy under Part 4 DA Act 2021.



*Working together to transform lives*

# Sheer scale and prevalence of DA in Birmingham

Domestic abuse is widespread and chronically under-reported. Whilst statistics provide an indication of how far-reaching domestic abuse is, reports will be much lower than the actual levels.

In 23/24 we saw:



24,192 calls to our DA Hub, averaging 66 per day



35,536 calls about DA to West Midlands police



1270 referrals to our specialist DA accommodation



23,547 DA crimes recorded



42 DHRs Apr '11 – Mar '24, & 3 identified DA related suicides in 23/24



618 of the referrals to our specialist DA accommodation were unsuccessful



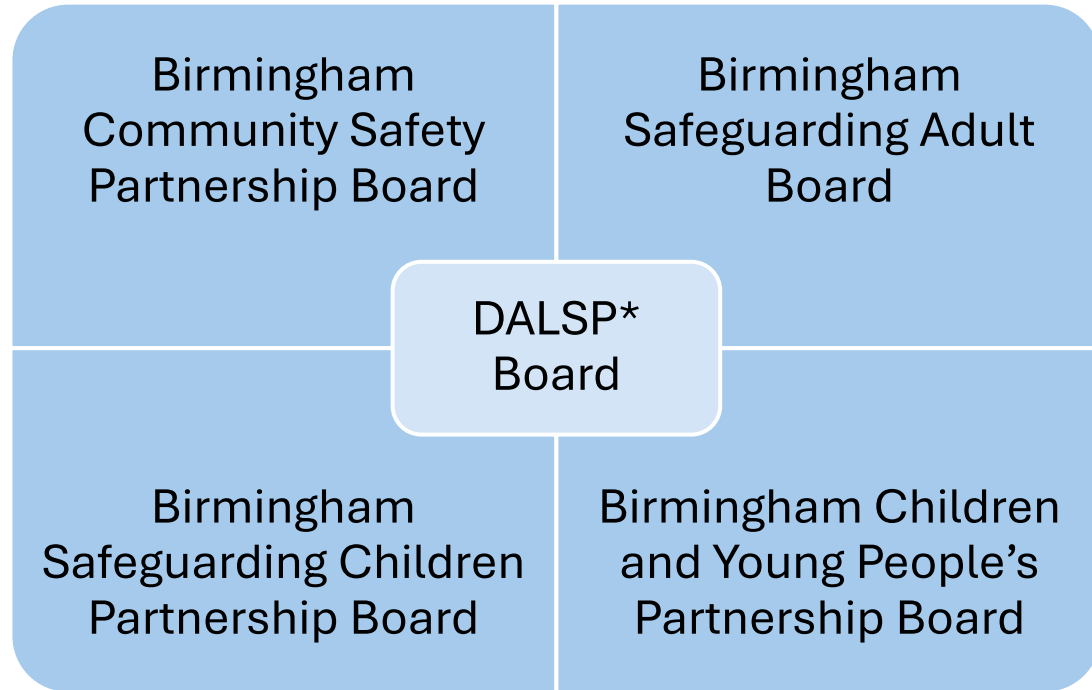
7,558 Operation Encompass Notifications in 5 months



1 in 5 children are subject to DA in the home – this is 57,493 Birmingham children

*Working together to transform lives*

# One City: One Collaborative Approach



**\*DALSP Board – Domestic Abuse Local Strategic Partnership Board**



*Working together to transform lives*



# What's different?

- **Shaped by partners, citizens and survivors**
- **Embeds an Early Intervention and Prevention approach**
- **For the first time creates partnership values**, highlights the importance of **not just what we do to tackle DA but *how we do it*** - listening, believing and being survivor centred
- **Adds new partnership priorities** to *protect children and young people* and to *hold perpetrators to account*
- **In recognition of super diverse city we live in, intersectionality runs throughout the strategy**
- **Seeks to improve outcomes for survivors and keep women and children safe**



*Working together to transform lives*

# Support for the strategy

Two public consultations on the outline and detail of the strategy have shaped the final outcome and shown the strong endorsement of this strategy from partners, specialist providers, citizens and survivors, and the impact that it can have.

“This person-centred approach is crucial to empower each survivor and get the support they need as quickly as possible”

“I am glad you are including the voice of the child which is often unheard”

“More abusers will get the message they cannot just do what they want.”

“It’s so important that domestic abuse is brought out into the open so that no one feels ashamed or alone and knows that they will get support and compassion.”

*Working together to transform lives*

# Scope of the Strategy

## This strategy responds to:

- Adults who are subject to domestic abuse.
- Children who are subject to domestic abuse.
- Adults who are perpetrating domestic abuse.

It acknowledges that **DA is a gendered crime**, that is fundamentally linked to the inequality of women and girls under the patriarchal system.

In Birmingham **74%** of domestic abuse calls made to the police are from women.

However, we are acutely aware that DA can affect anyone, regardless of age, sex, sexuality, gender, race, religion or belief, socioeconomic circumstances or any disability or limiting condition, and at any time.

We aim to ensure that there are services for **all** survivors of domestic abuse.

*Working together to transform lives*

# Our Vision

“Birmingham is a place where domestic abuse is not tolerated; where everyone can expect equality and respect in their relationships, and live free from domestic abuse.”

# Domestic Abuse Prevention Model



*Working together to transform lives*



# Our Strategy Priorities

## Priority 1

### **Whole systems approach**

Making DA everybody's business.

## Priority 2

### **Prevention- Changing attitudes and behaviours**

Promoting culture change to challenge attitudes that foster and perpetuate DA..

## Priority 3

### **Prevention - Early identification and help**

Strengthening confidence & first response from all professionals to prevent escalation of risk & harm.

## Priority 4

### **Children and young people are protected**

Raising awareness of healthy relationships. Identifying, supporting, safeguarding CYP affected by DA.

## Priority 5

### **Safety support and recovery**

Commissioning quality assured support to survivors in safe accommodation as per Part 4 DA Act duty. Developing a longer term & holistic offer to aid recovery.

## Priority 6

### **Holding perpetrators to account**

Developing an intervention pathway that sets out of range of actions that holds perpetrators to account, at every opportunity across the system.

*Working together to transform lives*

## **Our Shared Values:**

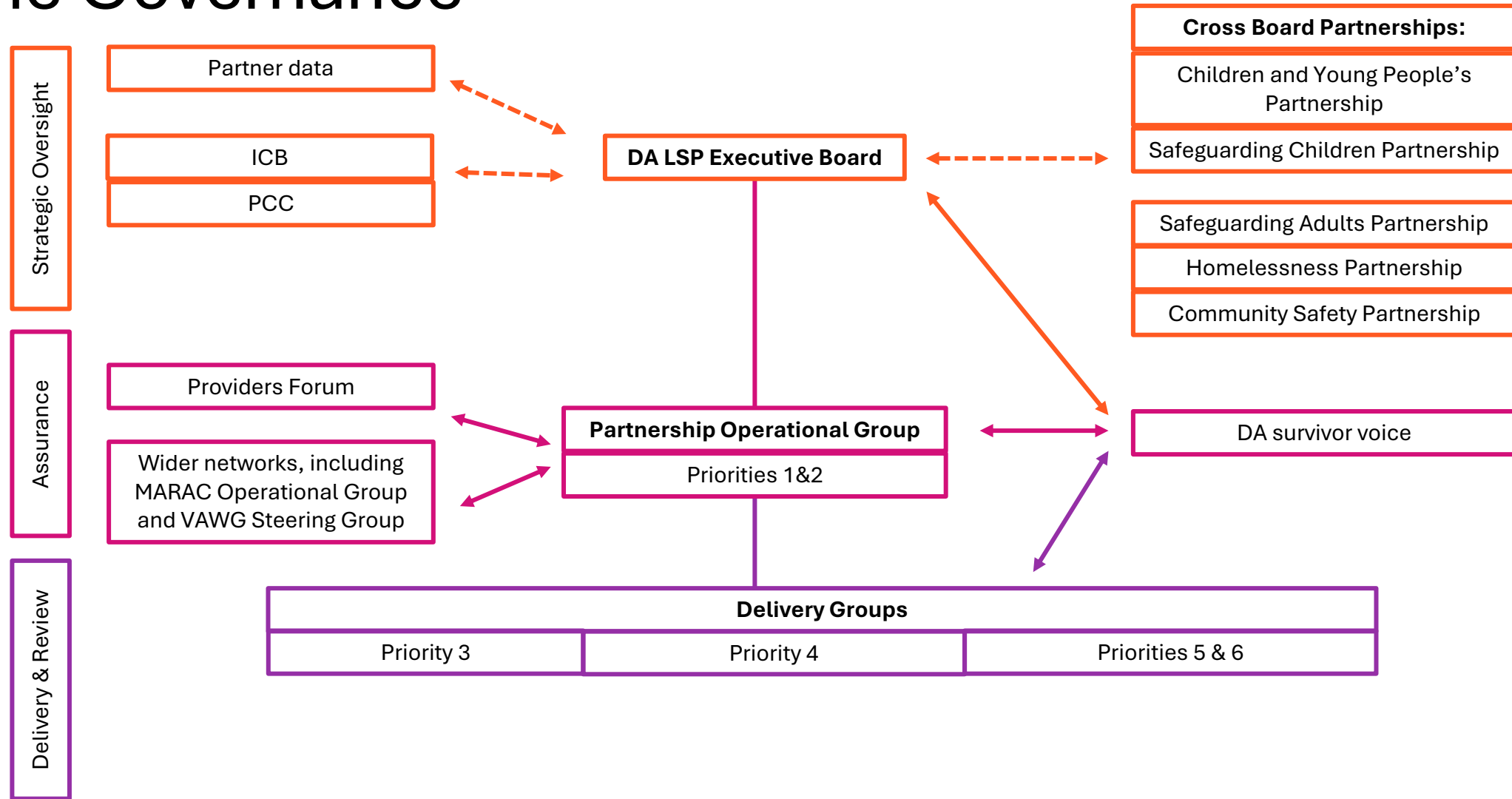
- **Survivor-centred & survivor-led**
- **Strengths-based**
- **Early Intervention and Prevention**
- **Perpetrator Accountability**
- **Intersectionality**
- **Robust partnership response**

## Toolkit Development

- We will be developing toolkits\* to help staff with practice guidance and evidence-based tools for:
- Working with Survivors of Domestic Abuse (including values),
- Supporting Children and Young People affected by Domestic Abuse,
- Holding Perpetrators Accountable

\*there are national toolkits available

# The Governance

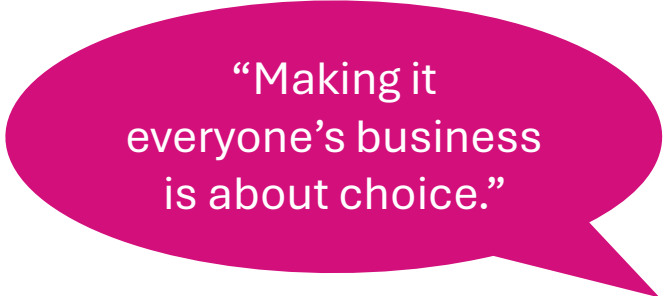


*Working together to transform lives*

# Pledges: Setting our Collective Commitments

We all need to tackle domestic abuse collectively as a whole system across the city. Domestic abuse is everyone's business.

- What will you commit to do going forwards?



“Making it everyone's business is about choice.”



*BIRMINGHAM*  
**DOMESTIC  
ABUSE**  
*Prevention  
strategy*

*Working Together to Transform Lives*

*Birmingham Domestic Abuse Local Strategic Partnership*



Read the strategy text at:  
<https://bit.ly/DAPS24>

Fully designed, accessible  
document coming soon!

**Thank you**

*BIRMINGHAM*  
**DOMESTIC  
ABUSE**

*Prevention  
strategy*

*Working Together to Transform Lives*

---

**Any Questions???**

*Birmingham Domestic Abuse Local Strategic*