



**BCHC Safeguarding Conference**

# **Domestic Abuse**

**Detective Chief Inspector Matt Underwood**

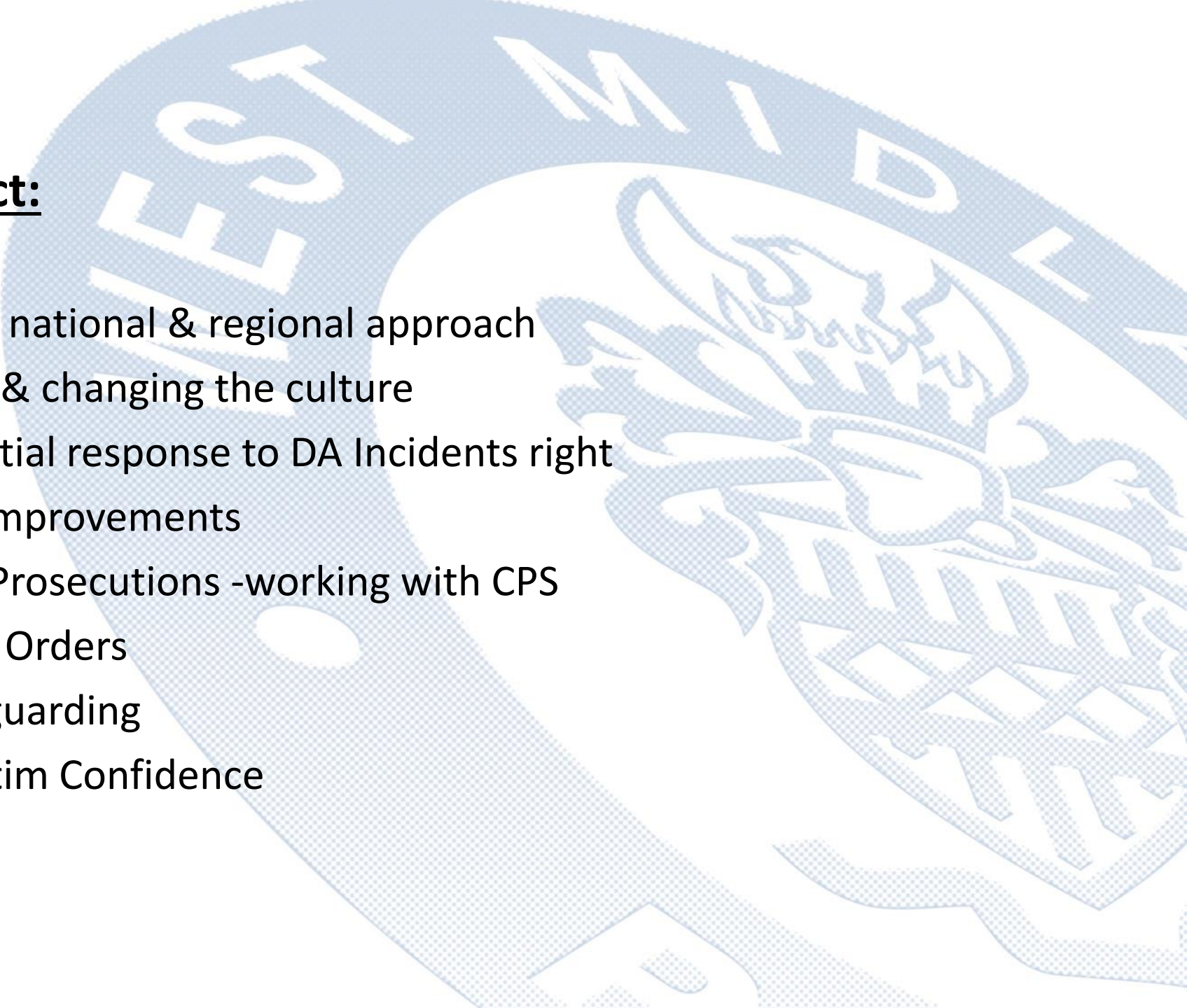
**Detective Inspector Laura Allen**

**West Midlands  
POLICE**





## **What to Expect:**

- Introduction – national & regional approach
  - WMP journey & changing the culture
  - Getting the initial response to DA Incidents right
  - Investigative Improvements
  - Evidence Led Prosecutions -working with CPS
  - Enforcing Civil Orders
  - Effective Safeguarding
  - Improving Victim Confidence
- 



## National Approach

Nationally – CPS/Police Joint Justice Plan

Objectives:

- Better Outcomes for Victims
- More timeliness in investigations
- Closer working between Police and CPS.

West Midlands – not a pathfinder force – but we do a lot of this locally.





## Regional Approach

- Determined to deliver on the Birmingham Domestic Abuse Prevention Strategy
- Focus within the strategy of holding perpetrators to account – Policing will do that by:

Maximising Opportunities to secure Criminal Justice Outcomes

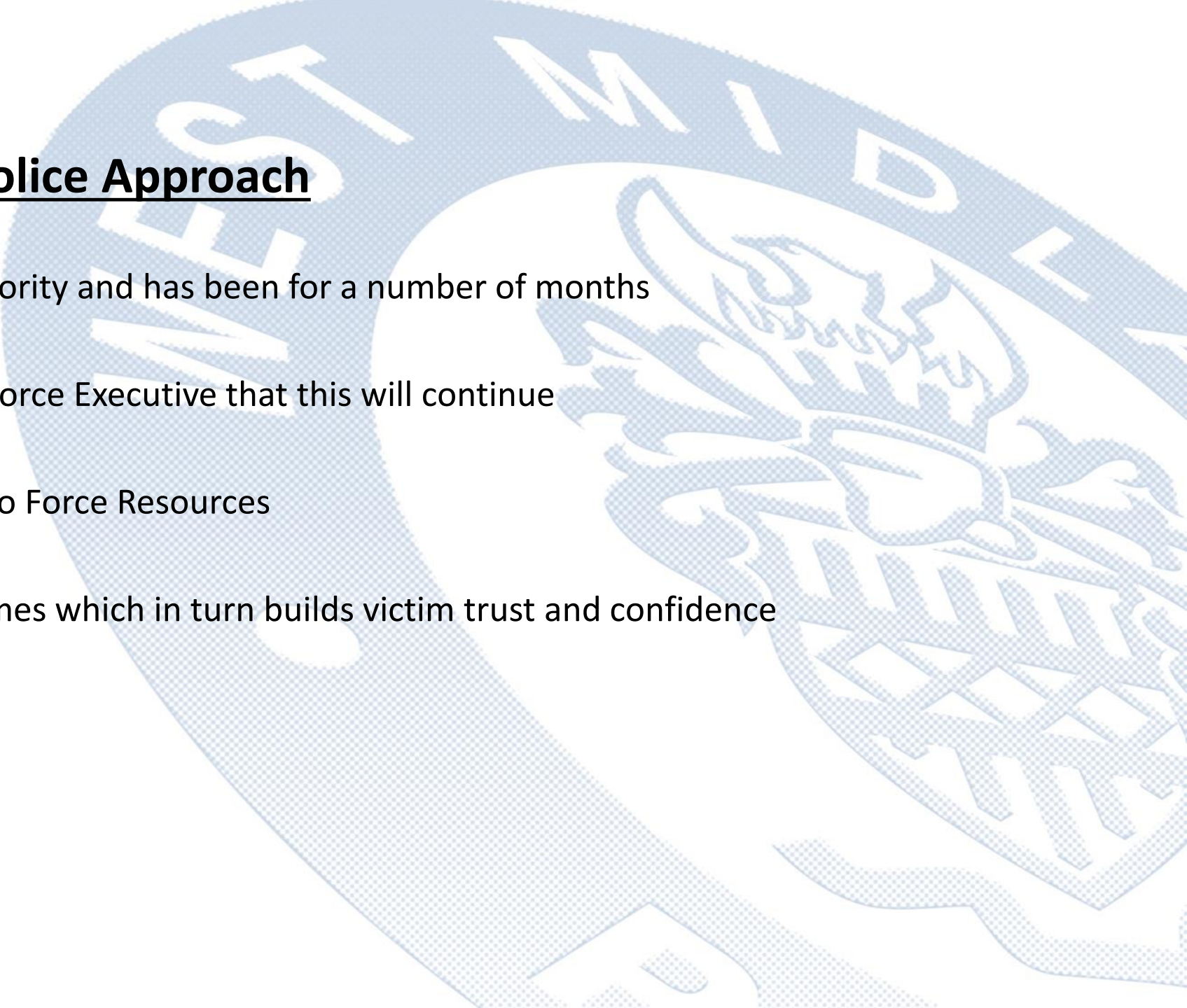
Focused on other disruption i.e look at other offending

Data Driven

- Safeguarding Survivors



## **West Midlands Police Approach**

- DA Force Tactical Priority and has been for a number of months
  - Direction from our Force Executive that this will continue
  - Enables us to bid into Force Resources
  - Enhances DA outcomes which in turn builds victim trust and confidence
- 

# Driving Improvements in Outcomes

~ 23/24 YTD Crime  
43,826

~ 24/25 YTD Crime  
41,152

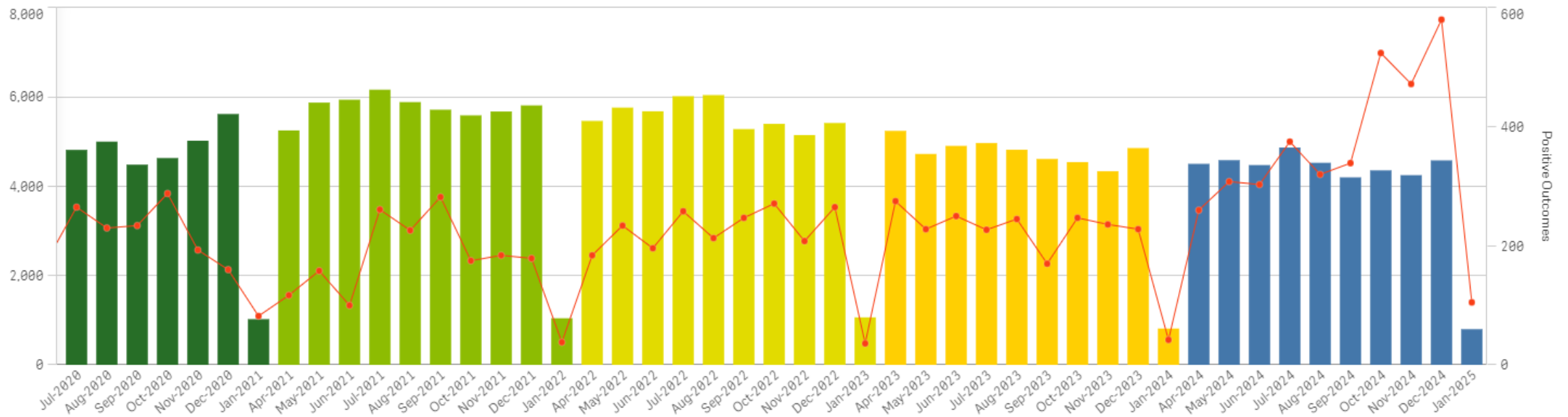
~ 24/25 YTD % Change  
-6.10%

~ 24/25 YTD Positive Outcomes  
3,586

~ 24/25 YTD Crime  
41,152

~ 24/25 YTD Outcome Rate  
8.71%

~ 24/25 YTD Charge Rate  
6.08%



# Driving Improvements in Outcomes

23/24 YTD Crime  
43,826

24/25 YTD Crime  
41,152

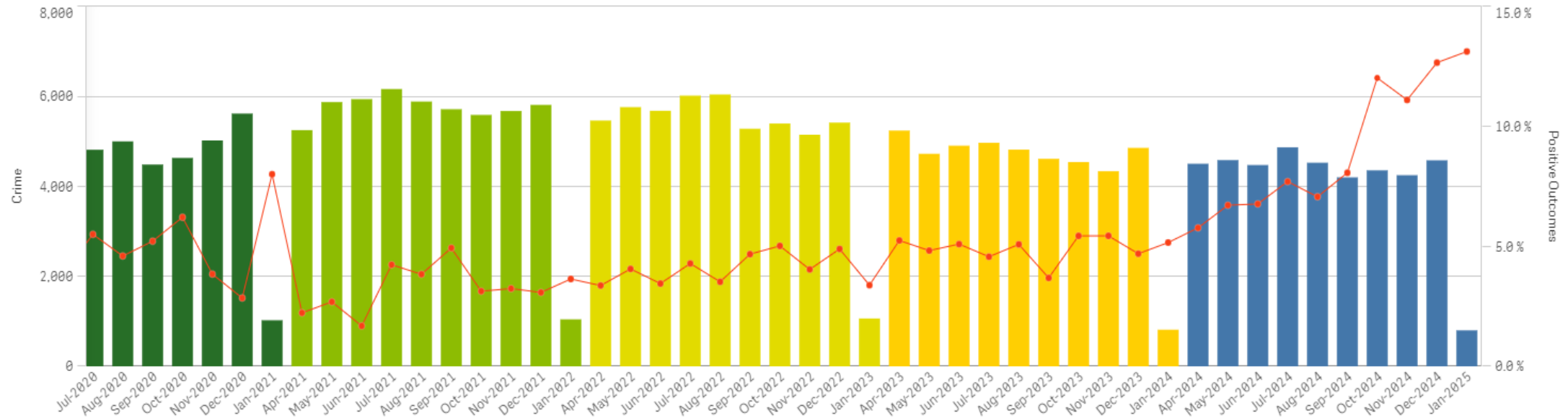
24/25 YTD % Change  
-6.10%

24/25 YTD Positive Outcomes  
3,586

24/25 YTD Crime  
41,152

24/25 YTD Outcome Rate  
8.71%

24/25 YTD Charge Rate  
6.08%





## West Midlands Police: Getting our culture right

- Force Priority
- Challenging Victim Blaming Language
- DA Improvement Plan focused on three key Elements

Primary Response

Investigative Standards ,

Victim Journey - (Evidence Led Prosecutions )

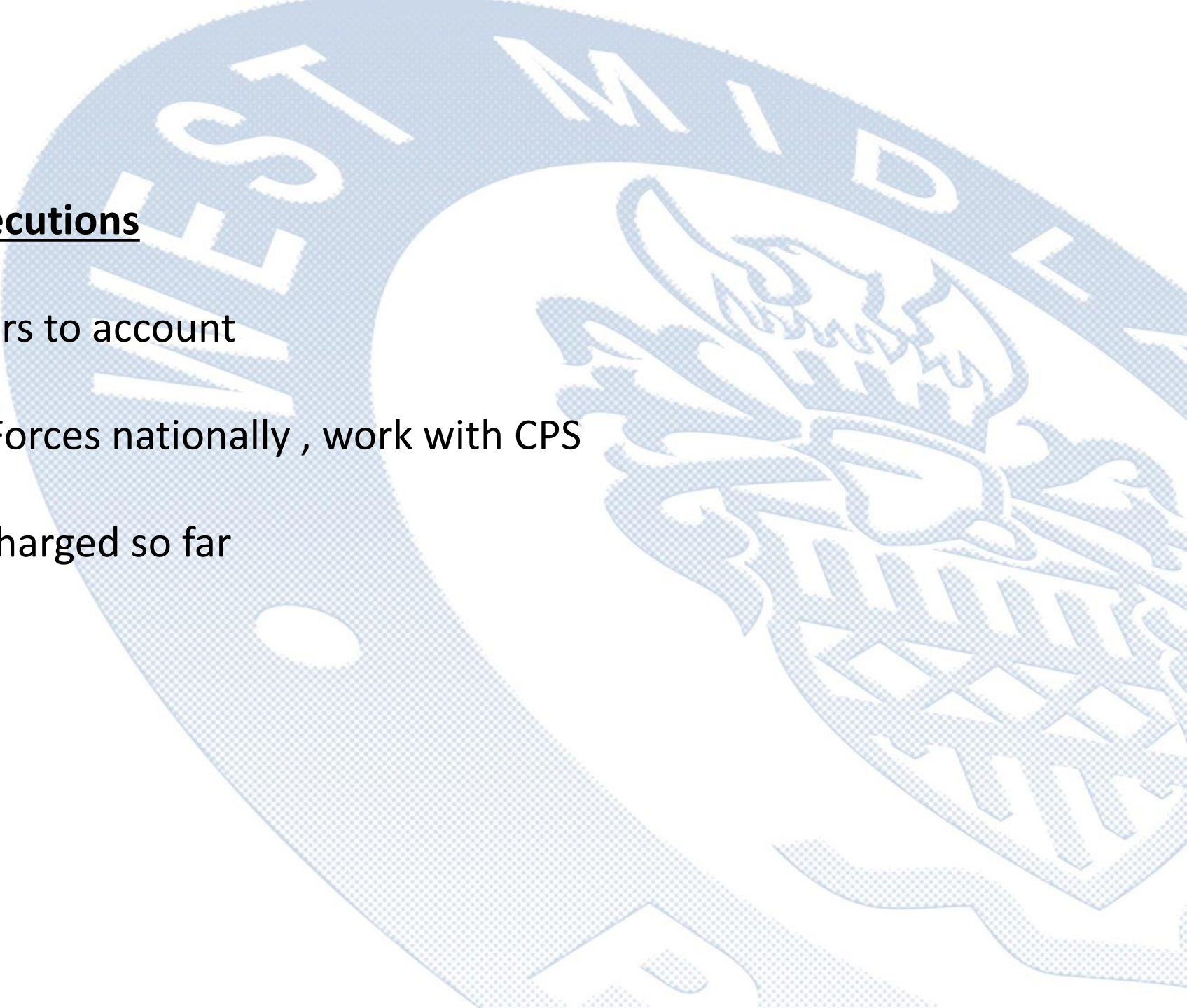


## **Primary Response to DA incidents:**

- Taking positive actions at incidents
- Greater level of auditing from Senior Leaders
- Continued Professional Development for front line officers



## **Evidence Led Prosecutions**

- Holds perpetrators to account
  - One of the best Forces nationally , work with CPS
  - Over 200 cases charged so far
- 

# Evidence Led Prosecution - Results

Number of ELPs Result

197	Charge
88	NFA
42	bail
12	Further enq (on-going)
9	Pre Charge
3	Caution
2	RUI

**353**

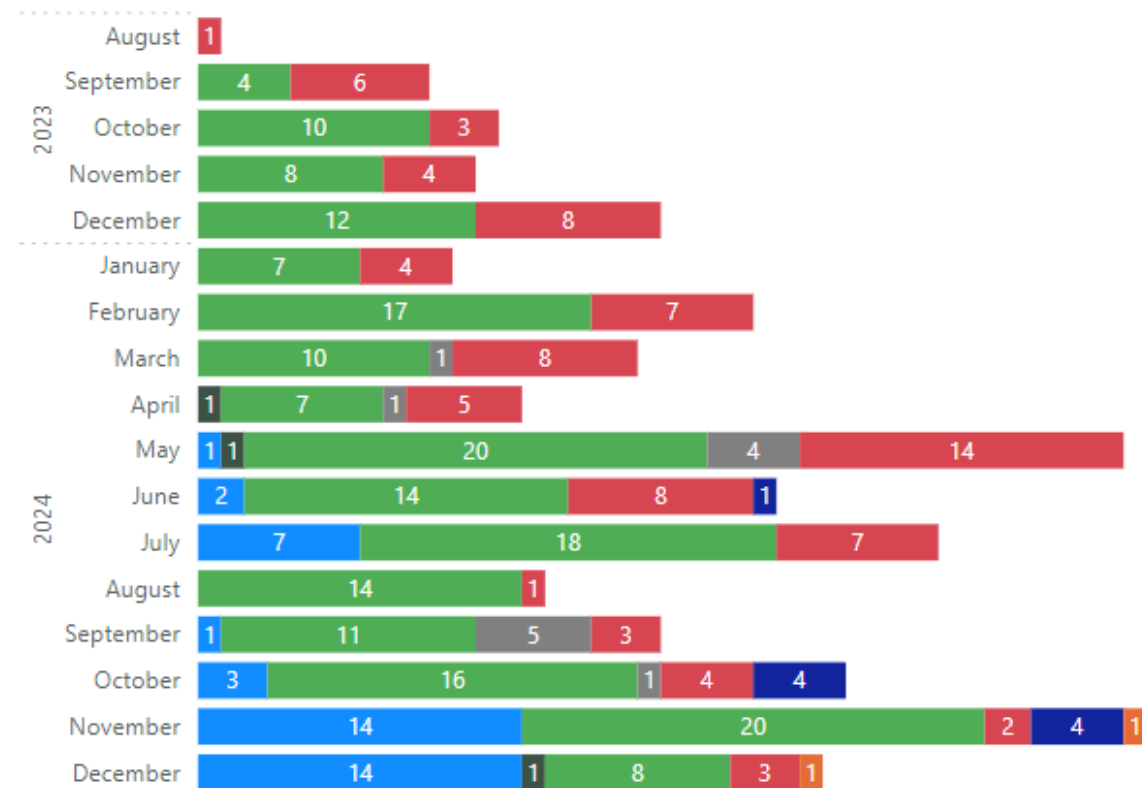
Number of ELPs Result

55.8%	Charge
24.9%	NFA
11.9%	bail
3.4%	Further enq (on-going)
2.5%	Pre Charge
0.8%	Caution
0.6%	RUI

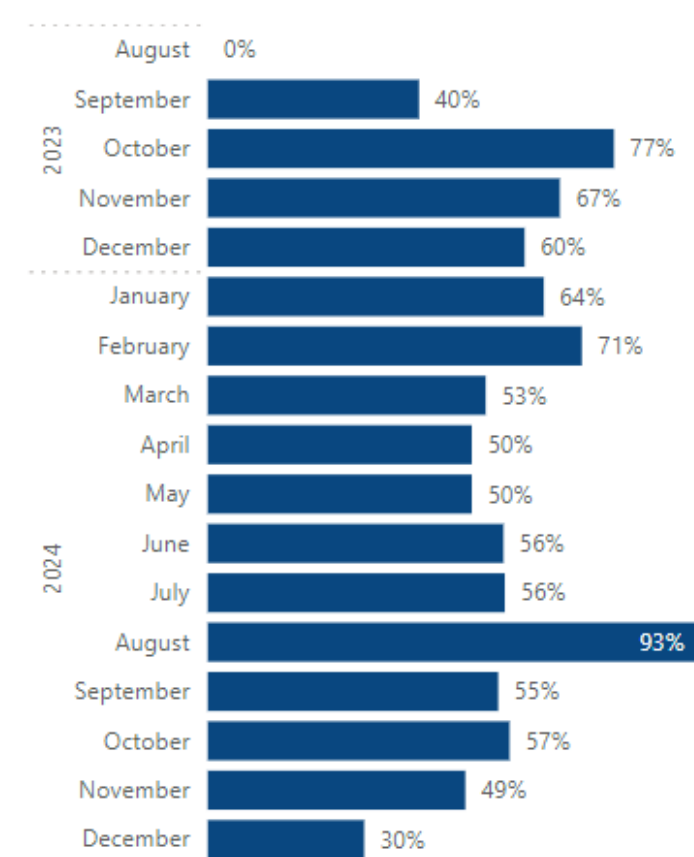
**100.0%**

## Number of ELP Results Per Month

Result ● bail ● Caution ● Charge ● Further enq (on-going) ● NFA ● Pre Charge ● RUI



## Charges as a % of ELP Monthly:

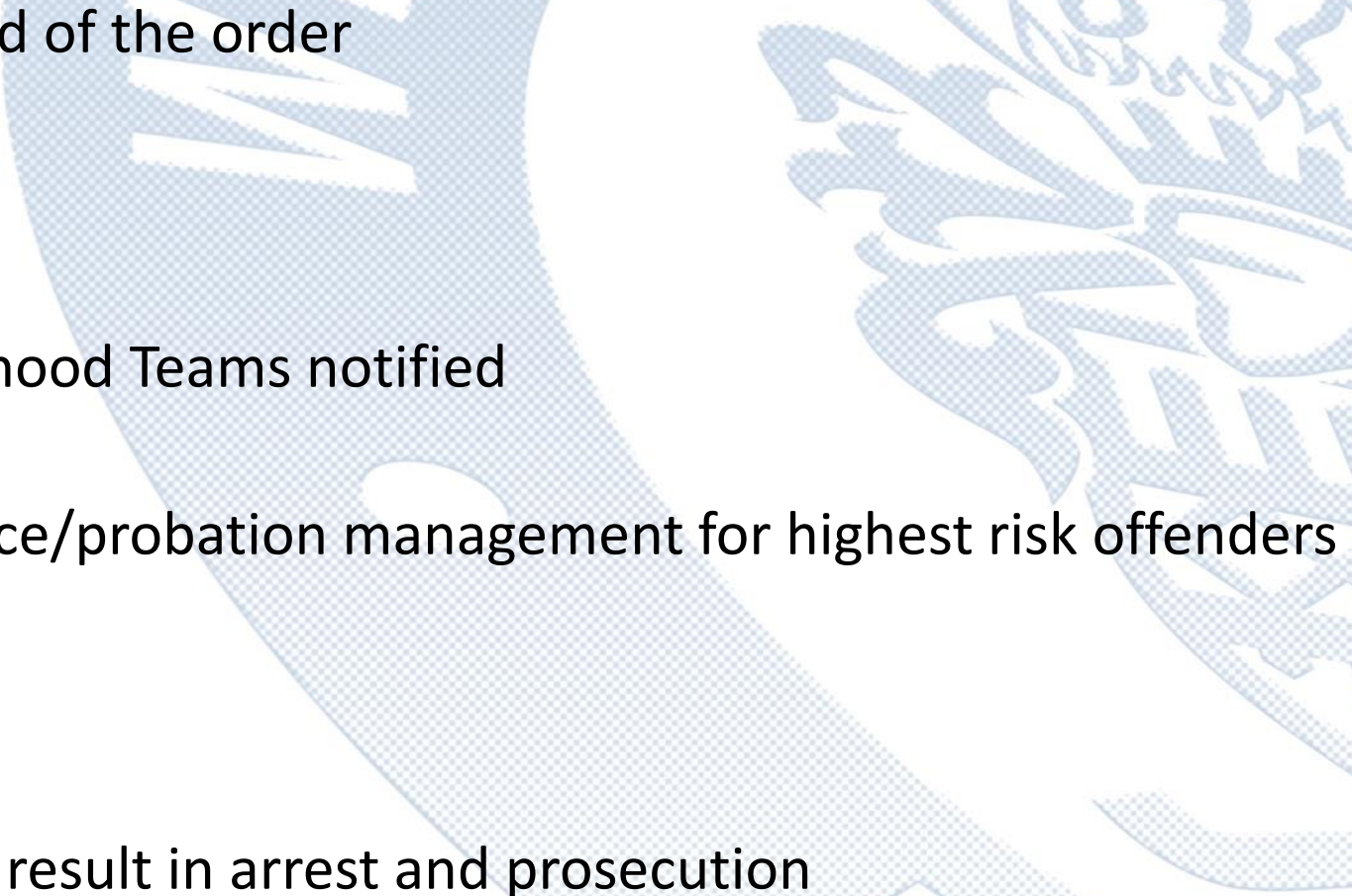


### Types of Civil Orders

- Non-molestation Order
- Prohibited Steps Order
- Occupational Order
- Stalking Protection Order
- Domestic Violence Protection Notice/Order



## **Enforcing the Orders**

- Police are notified of the order
  - Marked on PNC
  - Local Neighbourhood Teams notified
  - Potential for police/probation management for highest risk offenders
  - Partners notified
  - Breaches usually result in arrest and prosecution
- 

### **Standard and Medium Risk offenders**

- Crime is recorded by attention officer
- Marked as domestic abuse
- Safeguarding remains the responsibility of the OIC
- Victim is offered referrals and safety plan completed



## High Risk Cases

- Case is marked as high risk and tagged for safeguarding team
- Case is reviewed by a safeguarding supervisor
- Two pathways include referral into MARAC or Contact only
- MARAC cases
  - Referral form completed
  - Victim contact made and referrals offered
  - Safety plan completed
  - Additional measures completed if necessary
  - Partner contact made
- Contact only
  - Victim contacted and offered referrals
  - Safety plan completed
  - Partners notified



## Who can refer into MARAC?

- Any professional partner involved with a victim or perpetrator can made a referral
- Third party referrals are reviewed by MARAC coordinators to ascertain if they meet the threshold
- MARAC meetings take place Tuesday-Friday
  - Fifteen minutes per case
  - Partnership context conversation
  - Actions set
  - Safety plan reviewed

### How are the police improving trust and confidence?

- Higher number of positive outcomes
- Better trackable and recorded victim contact
- Setting realistic expectations from the outset
- More arrests of perpetrators
- Regular supervisor and manager reviews of investigations
- GoodSam